

Hail-storm & PV: and now?**Solar PV modules and hail**

1. PV modules are generally designed to withstand hail.
2. With glass/glass modules & thinner glasses, PV panels are becoming more fragile.
3. Hail events are becoming more frequent and intense.

1. What happens to the modules?

After a hail impact, the modules might:

- a) Be intact and correctly functioning.
- b) Present major visual defects (broken glass covers).
- c) Appear as intact (intact glass) but with broken cells.

Defective cells cannot be detected by the human eye and might result in severe PV system underperformance (and - with time - in a safety hazard).

2. What to do next?

If damaged cells are present, it is possible to detect them by adopting the following imaging techniques: **electroluminescence (EL)** and **UV-Fluorescence (UV-F)**.

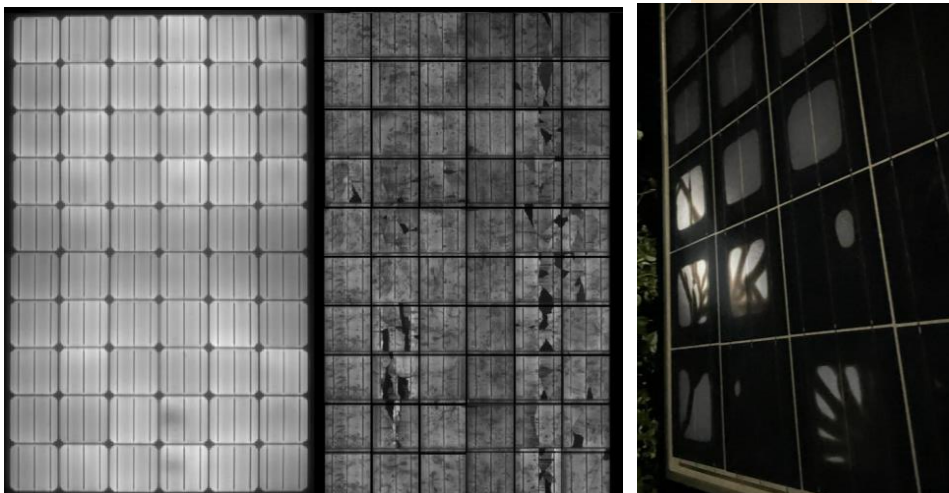
Act quickly to initiate a possible legal claim with the panel supplier or the insurance company, before the claim becomes statute barred.

**AT A GLANCE****CHALLENGES**

- Was my PV system affected by the last hail-storm?
- Act quickly (insurance & warranties)

BENEFITS

- Detect anomalies
- Restore PV system's performance
- Avoid safety hazards

**CONTACT US****OFFICINA DEL SOLE**

TESTING | ANALYSIS | SOLUTIONS

Via Morgagni, 40 - 20010
Pogliano Milanese (Mi)
P. IVA 10143840964
N. Verde 800 778 046

www.o-sole.eu | info@o-sole.eu